

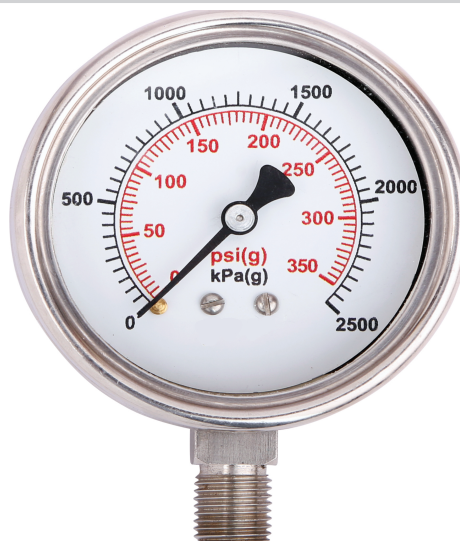
# Small Pressure Gauge 40-50-63 mm

Models : **SPGS** (Dry case)

**LFSPGS** (Liquid filled case)

## Features

- Designed to fulfill most industrial requirements as well as commercial
  - Range : (-) 1 to 600 kg/cm<sup>2</sup>
  - Bourdon in SS316 as standard
  - Accuracy  $\pm 2\%$  FSD
  - Unit of measurement - kg/cm<sup>2</sup>, bar, PSIG
- 
- Pressure Gauges are developed for OEM applications in compressed gases. Lubricating circuits etc.



## Specifications

<b>Dial</b>	40 mm / 50 mm / 63 mm in Aluminium, white background, black markings
<b>Case</b>	Pressed Steel, epoxy painted black SS304 with bayonet bezel
<b>Movement</b>	Brass, SS304
<b>Range</b>	(refer table 1) minimum span 1 kg/cm <sup>2</sup> , maximum 600 kg/cm <sup>2</sup>
<b>Accuracy</b>	$\pm 2\%$ FSD
<b>Overrange</b>	130% FSD
<b>Suitability</b>	(-) 20°C to 60°C for ferrous system (service temperature) (-) 20°C to 60°C for non-ferrous system (service temperature)
<b>Blow out disc</b>	Provided (on top)
<b>Optional</b>	Glycerine filled case (in SS case) Integral Dampher Swivel connection to facilitate rotation and in turn positioning of pressure gauge
<b>Note</b>	1) 40 mm panel mounted gauge will be provided with bracket mounting and 50 mm & 63 mm with front flange 2) Non ferrous system is recommended up to 40 kg/cm <sup>2</sup>

System	Bourdon	Socket	Movement
PB	Ph. Bronze	Brass	Brass
SS	SS316	SS316	SS304

**Table 1**

Range Bar(g), kg/cm <sup>2</sup> (g)	System - SS			System - PB		
	1-1/2" Dial	2" Dial	2-1/2" Dial	1-1/2" Dial	2" Dial	2-1/2" Dial
(-)1 to 0 Vacuum	x	x	Yes	x	Yes	Yes
(-) 1 to (+)1.5	x	Yes	Yes	x	Yes	Yes
(-) 1 to (+)3	x	Yes	Yes	x	Yes	Yes
(-) 1 to (+)5	x	Yes	Yes	x	Yes	Yes
(-) 1 to (+)9	x	Yes	Yes	x	Yes	Yes
(-) 1 to (+)15	x	Yes	Yes	x	Yes	Yes
(-) 1 to (+)24	x	Yes	Yes	x	Yes	Yes
(-) 1 to (+)39	x	Yes	Yes	x	Yes	Yes
0 to 1	x	x	Yes	Yes	Yes	Yes
0 to 1.6	Yes	Yes	Yes	Yes	Yes	Yes
0 to 2.5	Yes	Yes	Yes	Yes	Yes	Yes
0 to 4	Yes	Yes	Yes	Yes	Yes	Yes
0 to 6	Yes	Yes	Yes	Yes	Yes	Yes
0 to 10	Yes	Yes	Yes	Yes	Yes	Yes
0 to 16	x	Yes	Yes	x	x	x
0 to 25	x	Yes	Yes	x	x	x
0 to 40	x	Yes	Yes	x	x	x
0 to 60	x	Yes	Yes	x	x	x
0 to 100	x	Yes	Yes	x	x	x
0 to 160	x	Yes	Yes	x	x	x
0 to 250	x	Yes	Yes	x	x	x
0 to 400	x	Yes	Yes	x	x	x

Yes = Range Available X = Range not available

Under Technical Collaboration with M/s. Gauges Bourdon, U.K.

# Small Pressure Gauge 40-50-63 mm

Models : **SPGS** (Dry case)

**LFSPGS** (Liquid filled case)



## Ordering Information

### MODEL :SPGS



**MOUNTING**  
 V Bottom Entry, Local Mounting  
 C Back Entry, Local Mounting  
 S Bottom Entry, Surface Mounting  
 P Back Entry, Flush Panel Mounting  
 B Back Entry, Surface Mounting

**DIAL**  
 04 - 40 mm      06 - 63 mm  
 05 - 50 mm

**CASE**  
 PS Pressed Steel  
 SS Stainless Steel

**BOURDON/SOCKET**  
 P Phosphor Bronze / Brass  
 S SS316 / SS316

**MOVEMENT**  
 2 - Brass  
 4 - SS304

CONNECTION			
SIZE	TYPE	MALE / FEMALE	METRIC THREADS
4 1/8"	NT NPT	M Male	18 M - M 18 x 1.5
6 1/4"	NT NPT	F Female	20 M - M 20 x 1.5
10 3/8"	BP BSP		24 M - M 24 x 1.5
15 1/2"	BT BSPT		27 M - M 27 x 2
20 3/4"	PF PF		33 M - M 33 x 2
25 1"	GS Gas		XX - Any other
32 1.1/4"	NS NPSM		
40 1.1/2"			

**OPTION**  
 D Dual Scale  
 G Glycerine filled case  
 L Nil  
 S Integral Dampner  
 X Accessory - Refer Catalogue ACC

**UNIT**  
 A kg/cm2 (g)  
 B Bar (g)  
 C Psig  
 F Pl. specify

**RANGE**  
 Refer Table 1

F - FLANGED PROCESS CONNECTION **					
Size	Code	Rating	Code	Facing	Code
1/2"	15	150#	A	RF	RF
3/4"	20	300#	B	FF	FF
1"	25	600#	C	RTJ	RTJ
1 1/2"	40	900#	D	LT	LT
2"	50	1500#	E	LG	LG
3"	80	2500#	F		

The recommendations made in this catalogue are to be used as intended guide. No guarantee of material can be undertaken since other factors may affect the performance. We reserve the right to change the specifications mentioned in this catalogue without any notice as improvements & development is a continuous process. Responsibility of typographical errors is specifically disclaimed.